



# SECTION 1 Plaits & Projects

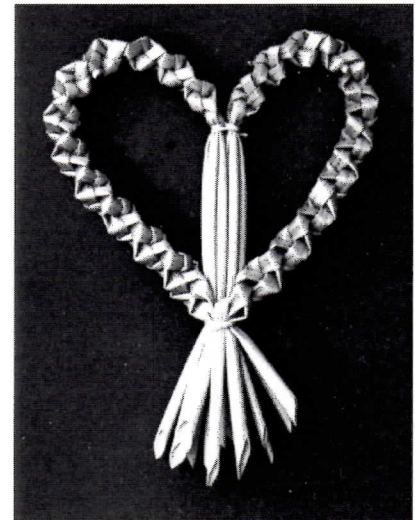
## Compass Plait

### Materials

4 medium straws

### Instructions

1. Tie 4 straws together, and hold with the heads hanging down.
2. Bend the straws down in four directions so that they are parallel to the floor and at right angles to each other (fig. 1). The straws are now designated as North, South, East, and West.
3. Fold the North straw south so that it lays beside the South straw (fig. 1); fold the South straw to the North so that it lays beside the spot where the North straw was originally (fig. 2). *Important note: The straws never cross over each other (they stay in their own 'lanes').*
4. Do the same with the East and West straws, that is, fold the East straw West to lay beside the West straw (fig. 3); fold the West straw East to lay beside the spot the original East straw occupied (fig. 4).
5. Continue thusly until desired length. Tie and trim threads.



## Heart Favor Pin

Judy McCaskey

*This is a lovely wall decoration if done on a larger scale with the heads left on the weaving.*

### Materials

8 headless soaked straws, at least 10" long, medium diameter

Pin back, clothespin

Narrow ribbon for a bow (see page 51 for bow instructions)

### Instructions

1. Tie 8 matched straws together about 1 1/2" from the butt ends. Trim threads.
2. Holding the straws with the knot in the back, divide the straws into two groups of 4 straws each. Clothespin one group of straws out of your way.
3. With the other group, plait a 3" length of Compass Plait, leaving at least 1 1/2" of unplaited straw. Tie, using a Clove Hitch. Do not trim straws.
4. Repeat with the other 4 straws, making sure that both plaited sections are the same length.
5. Tie the two plaits together, right over the previous ties.
6. Spread the two plaits side to side and bring the unplaited straws down behind (and in between) the plaited straws which become the sides of the heart. The unplaited straws form a post down the center of your heart. Adjust this post up and down until it measures about 1" from tie to tie. Tie over original tie, leaving the butt ends in front.
7. Cut all straw ends on the diagonal (called quill cutting) to about 1" or less.
8. Shape heart as you like and pin on a board to dry. Sew on pin back. Decorate with ribbon if desired.

